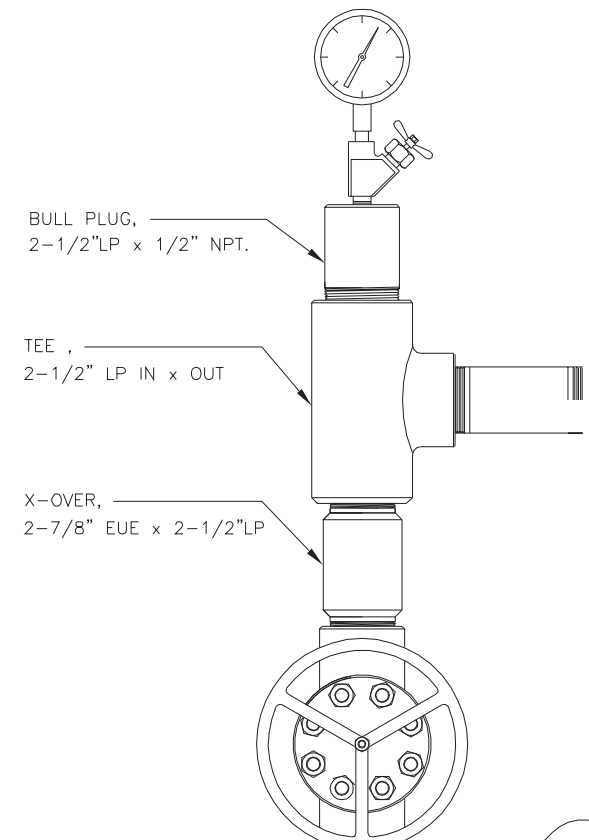


ESP PENETRATOR ESP WELLHEAD SYSTEM

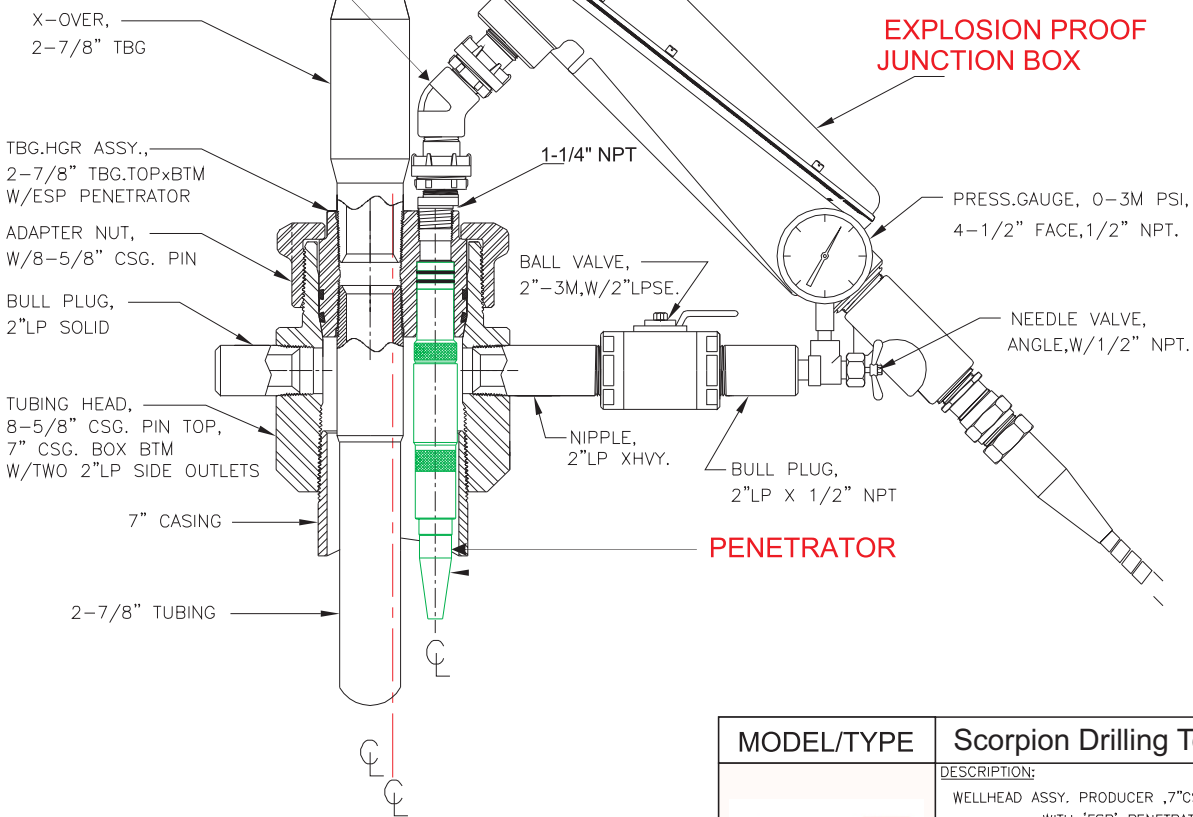
Technical Specification


Scorpion Drilling Technology Ltd
CN: SC576776-Westhill-Aberdeenshire
United Kingdom

Scorpion 
Drilling Technology

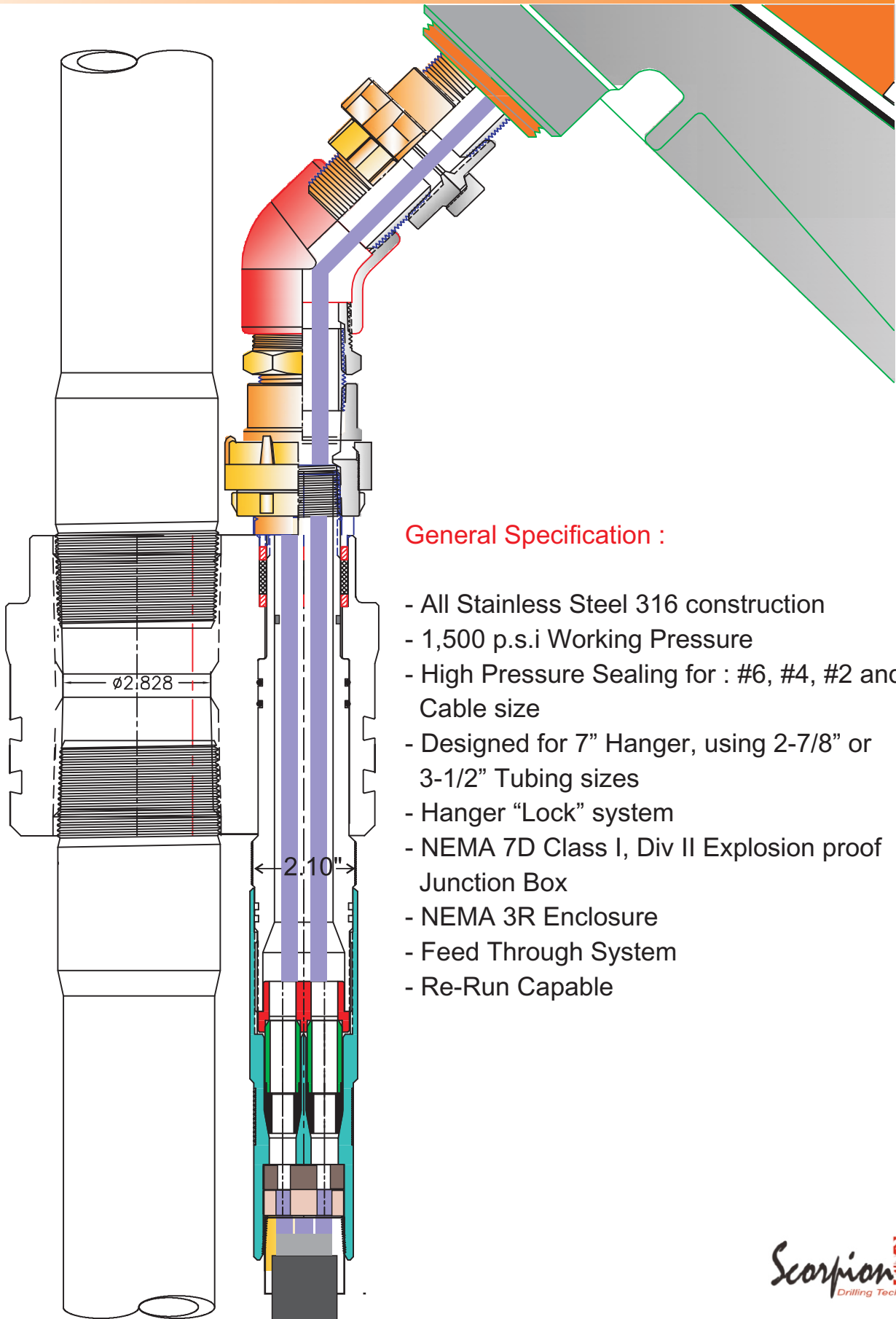


SURFACE X/O ASSY



| | | | |
|---|---|--------------|------------------------------|
| MODEL/TYPE | Scorpion Drilling Technology Ltd | | |
|  | DESCRIPTION: WELLHEAD ASSY. PRODUCER ,7"CSG.X2-7/8" TUBING 3M WP. WITH 'ESP' PENETRATOR TYPE. | | |
| | COSTUMER: | | DWG NO · ST-WO1114 |
| DRAWN BY : GS | DATE : MAY/10/10 | REVISION : Ø | |
| CHECKED BY : AF | DATE : MAY/10/10 | | |

SCP-6500-SCORPIO FEED THROUGH SYSTEM

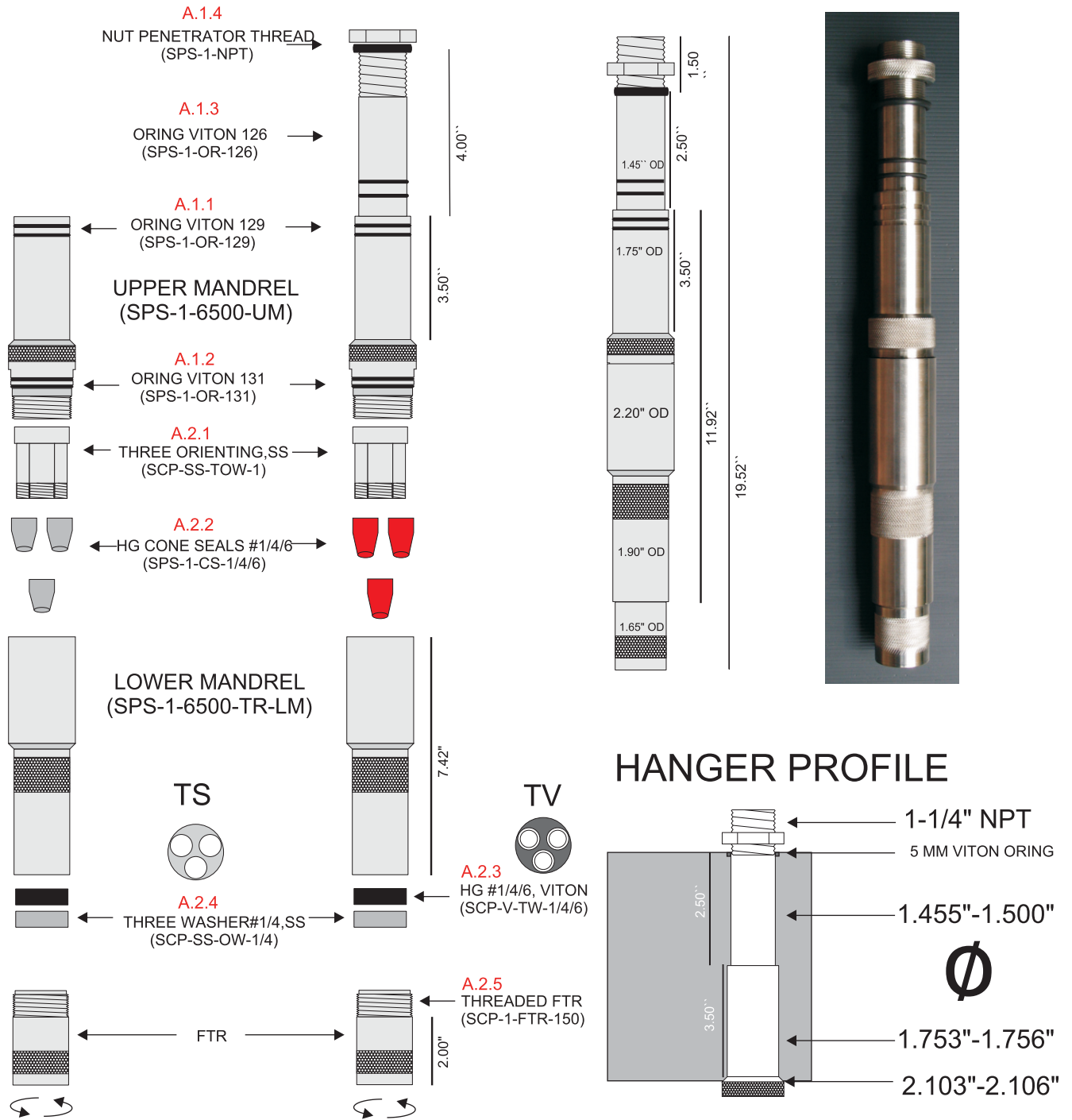


General Specification :

- All Stainless Steel 316 construction
- 1,500 p.s.i Working Pressure
- High Pressure Sealing for : #6, #4, #2 and #1 Cable size
- Designed for 7" Hanger, using 2-7/8" or 3-1/2" Tubing sizes
- Hanger "Lock" system
- NEMA 7D Class I, Div II Explosion proof Junction Box
- NEMA 3R Enclosure
- Feed Through System
- Re-Run Capable

SCP 6500 SCORPIO PENETRATOR

ADVANCED (HIGH GAS PRESSURE) SEAL SYSTEM



Advanced
(SPS-6000)

Advanced
(SCP-6500)

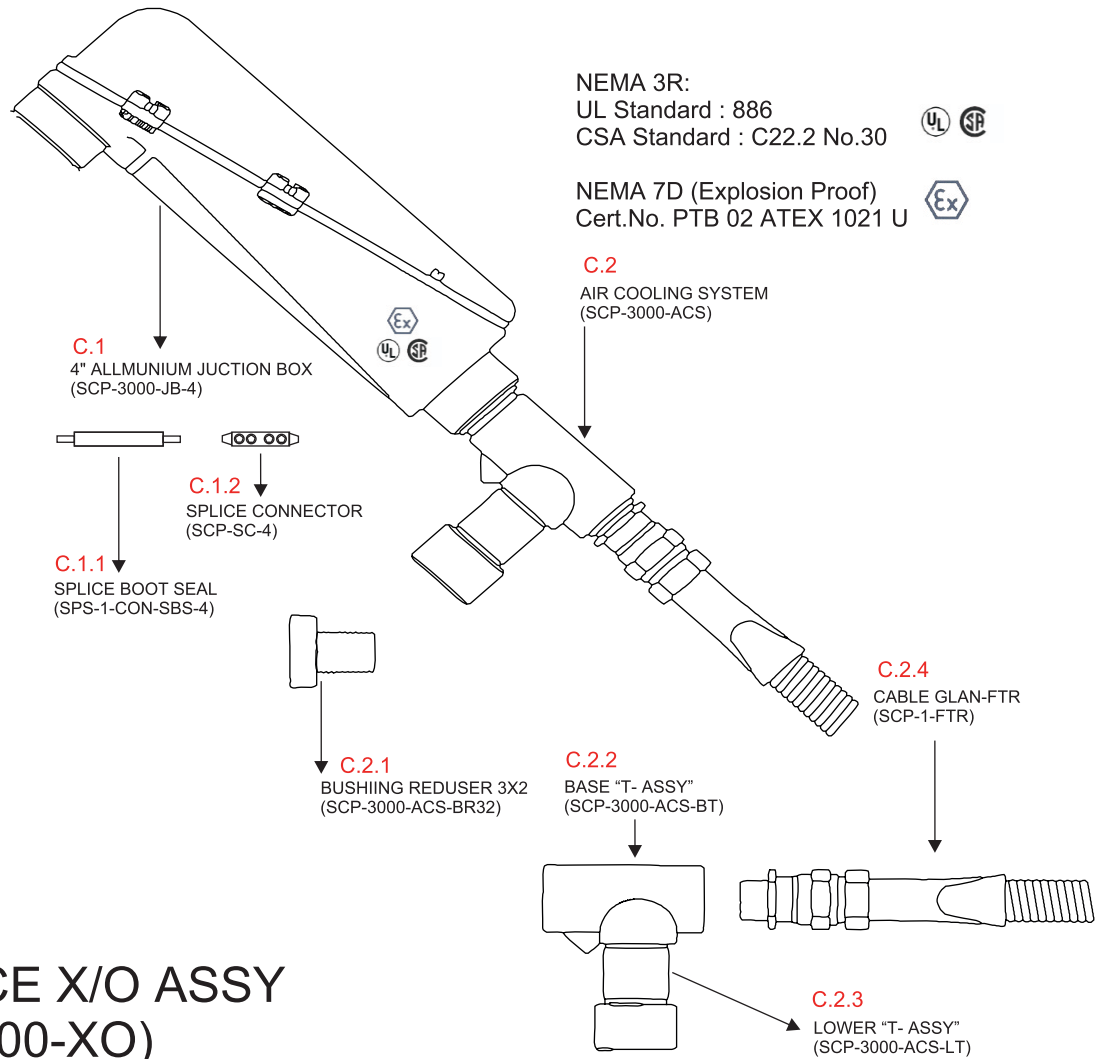


| | | |
|---|-------------------|------------------------------|
| Scorpion Drilling Technology Ltd | | |
| DESCRIPTION: SCP-6500-SCORPIO ADVANCED FIELD ATTACHABLE PENETRATOR SYSTEM | | |
| SEAL DESIGNED BY : Offshore Seals Inc-UK/Sing | | Part Number SCP-1-6500-TR |
| TECH DESIGNED BY : MSI Inc-Oklahoma-USA | | |
| DRAWN BY : GS | DATE : SEPT/25/10 | REVISION : ∅ |
| CHECKED BY : AF | DATE : SEPT/25/10 | |

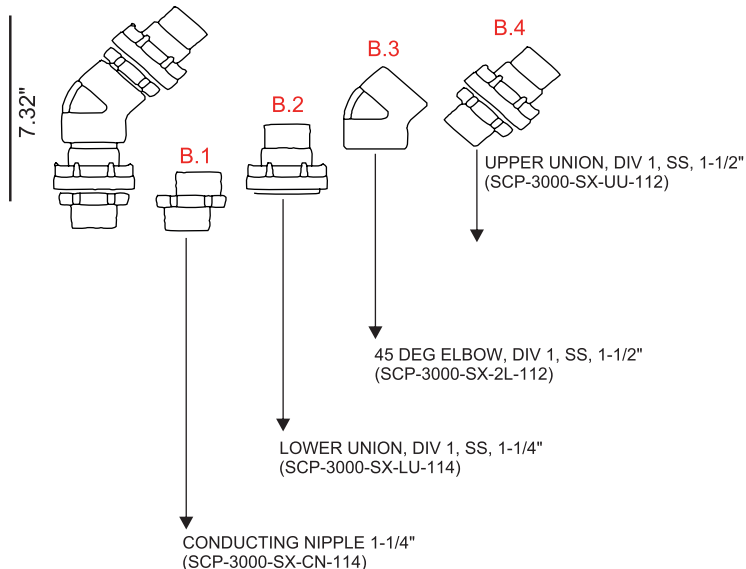
EXPLOSION PROOF JUNCTION BOX ASSY

Comply to NEMA 7D Class I Div II & NEMA 3R

By : LBH, Crouse-Hinds, Cooper-USA



SURFACE X/O ASSY (SCP-6500-XO)



| | | |
|---|-------------------|-----------------------------------|
| Scorpion Drilling Technology Ltd | | |
| DESCRIPTION: | | |
| SCP-6500-SCORPIO EXPLOSION JUNCTION BOX & SURFACE X/O | | |
| SEAL DESIGNED BY : Offshore Seals Inc-UK/Sing | | Part Number SCP-6500-JB |
| JUNCTION BOX MFG : Crouse Hinds, Cooper-USA | | |
| DRAWN BY : GS | DATE : SEPT/25/10 | REVISION : ∅ |
| CHECKED BY : AF | DATE : SEPT/25/10 | |

Conduit Outlet Bodies, Elbows and Tees

Cl. I, Div. 1 & 2, Groups A,B,C,D Explosionproof
 Cl. II, Div. 1, Groups E,F,G Dust-Ignitionproof
 Cl. II, Div. 2, Groups F,G
 Cl. III
 NEMA 7ABCD,9EFG

SPS JUNCTION BOX
P/N. SPS-3-SC-ASY-1

Application:

LBH conduit outlet bodies are installed in hazardous areas to:
 act as pull outlets especially for conductors that are stiff due to large size or type of insulation make 90° bends in conduit system, allowing straight pull in either direction

provide for conduit service entrance to buildings
 provide for conductor entrance to motors
 provide access to wiring for maintenance and future system changes

LBY elbows are installed in conduit systems within hazardous areas to:

make 90° bends in conduit systems where space is limited
 act as pull outlets
 provide access to conductors for maintenance and future system changes

ET series short radius tees are installed in conduit systems within hazardous areas to:

allow single conduit stub up to outlet and device boxes located above or below main conduit runs. Eliminates separate feed and return conduits

Features:

LBH bodies have:
 cover openings on an angle, permitting conductors to be pulled straight through hubs from either direction

LBY –
 domed covers to permit easy conductor bends (relieves strain on insulation)
 taper threaded hubs with integral bushings

ET –
 maximum volume for bends within a compact overall size
 screw on cover for ease of installation and removal
 cover opening on an angle, permitting conductors to be pulled straight through either hub
 taper threaded hubs and integral bushing for rigid threaded conduit

ET short radius tees have:
 compact size and small radius of bend for use in concealed, or open conduit systems.
 Particularly suited for use in shallow floors or partitions

taper threaded hubs and integral bushing for rigid threaded conduit

‡ Largest hub is shown at top of photo.

Standard Materials:

LBH, LBY and ET – *Feraloy* iron alloy

Standard Finishes:

LBH, LBY and ET –
 electrogalvanized and aluminum acrylic paint

Options:

| Description | Suffix to be Added to Cat. # |
|---|------------------------------|
| LBH and LBY series – copper-free aluminum | SA |
| LBH and LBY series – <i>Corro-free™</i> epoxy powder coat | add suffix S752 |

Size Ranges:

LBH bodies – hub size 1/2 to 4
 LBY elbows – hub size 1/2 to 1/2

Certifications and Compliances:

NEC:
LBH 10-20 –
 Class I, Division 1 & 2, Groups B,C,D
 Class II, Division 1, Groups E,F,G
 Class II, Division 2, Groups F,G
 Class III

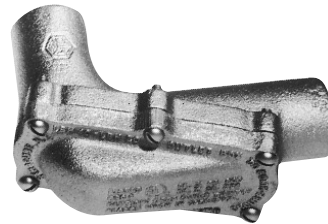
LBH 30-100
 Class I, Division 1 & 2, Group D
 Class II, Division 1, Groups E,F,G
 Class II, Division 2, Groups F,G
 Class III

LBY –
 Class I, Division 1 & 2, Groups C,D
 Class II, Division 1, Groups E,F,G
 Class II, Division 2, Groups F,G
 Class III

ET –
 Class I, Division 1 & 2, Groups A,B,C,D
 Class II, Division 1, Groups E,F,G
 Class II, Division 2, Groups F,G
 Class III

UL Standard: 886
 CSA Standard: C22.2 No. 30

See Compliances for classification of each product.



LBH

| Size | Cat. # |
|-------|--------|
| 1/2 | LBH10 |
| 3/4 | LBH20 |
| 1 | LBH30 |
| 1 1/4 | LBH40 |
| 1 1/2 | LBH50 |
| 2 | LBH60 |
| 2 1/2 | LBH70 |
| 3 | LBH80 |
| 3 1/2 | LBH90 |
| 4 | LBH100 |

LBY

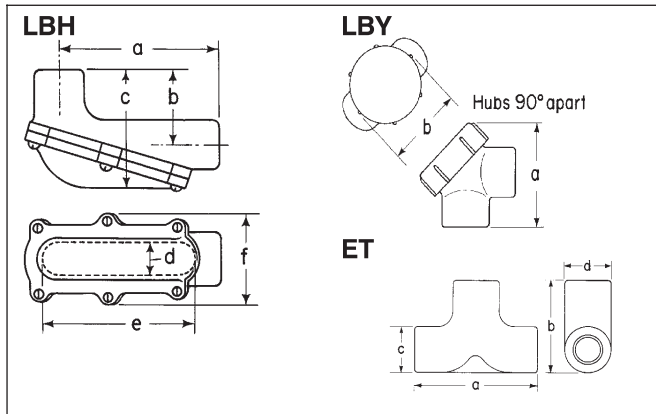
| Size | Cat. # |
|-------|--------|
| 1/2 | LBY15 |
| 3/4 | LBY25 |
| 1 | LBY35 |
| 1 1/4 | LBY45 |
| 1 1/2 | LBY55 |



ET

| Size | Cat. # |
|-----------------|--------|
| 3/4-1-1 1/2 | ET218 |
| 3/4-1 1/4-1 3/4 | ET228 |
| 1-1 1/4-1 3/4 | ET328 |

Dimensions

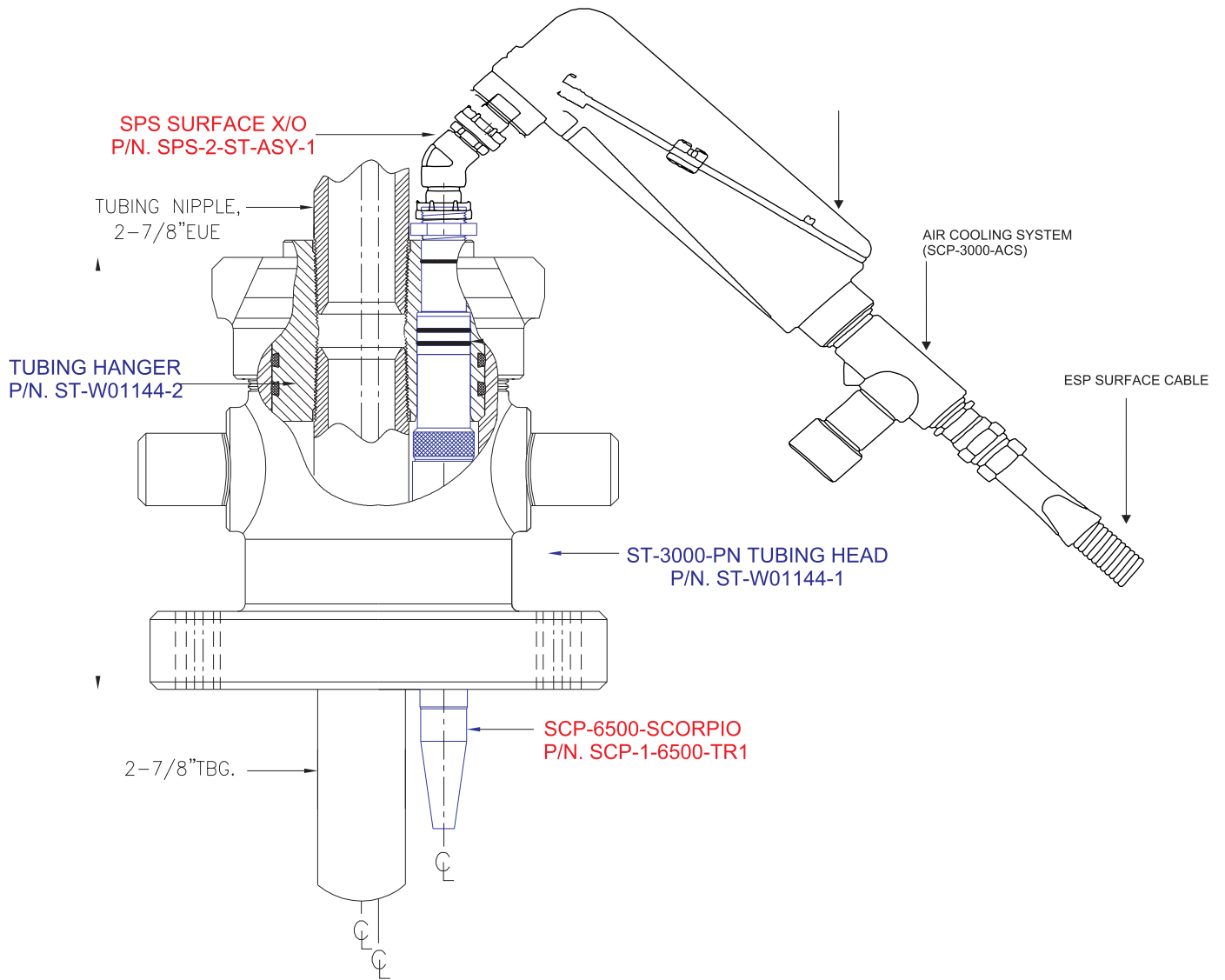


LBH

| Size | a | b | c | d | e | f |
|-------------|----------|----------|--------|--------|--------|-------|
| 1/2 - 1 1/4 | 5 1/16 | 2 19/32 | 4 | 1 3/16 | 4 | 2 3/4 |
| 1 - 1 1/4 | 7 7/8 | 3 13/32 | 5 1/4 | 1 1/2 | 7 | 4 |
| 1 1/2 | 10 15/16 | 4 1/2 | 7 3/32 | 2 1/2 | 10 | 5 |
| 2 | 10 21/32 | 4 25/32 | 7 3/32 | 2 1/2 | 10 | 5 |
| 2 1/2 - 3 | 15 7/8 | 5 1/2 | 9 1/2 | 3 | 15 3/4 | 5 7/8 |
| 3 1/2 - 4 | 23 3/16 | 6 1 1/16 | 11 1/4 | 4 | 24 | 7 1/8 |

LBY

| Size | a | b | ET Size | a | b | c | d |
|-------|---------|---------|-----------------|---|-------|-------|-------|
| 1/2 | 2 9/16 | 2 | 3/4-1-1 1/2 | 4 | 2 5/8 | 1 1/4 | 1 1/2 |
| 3/4 | 2 13/16 | 2 1/4 | 3/4-1 1/4-1 3/4 | 4 | 3 | 1 1/2 | 1 1/2 |
| 1 | 3 3/8 | 2 1/2 | 1-1 1/4-1 3/4 | 4 | 3 | 1 1/2 | 1 1/4 |
| 1 1/4 | 3 3/4 | 2 15/16 | | | | | |
| 1 1/2 | 4 1/4 | 3 1/8 | | | | | |



Scorpion Drilling Technology Ltd

DESCRIPTION:

SCP-6500-SCORPIO ASY & WELLHEAD

SEAL TECHNOLOGY BY : OFFSHORE SEALS Inc

DWG NO

DESIGNED FOR : SCHLUMBERGER

ST-W01145

DRAWN BY : GS

DATE : SEPT/25/10

CHECKED BY : AF

DATE : SEPT/25/10

REVISION : ∅

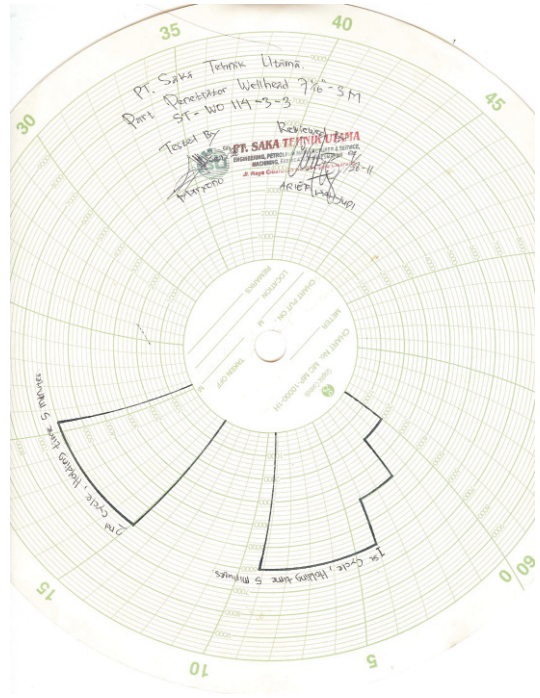
LOCAL MANUFACTURED/ASSEMBLED BY : PT. ENERGI PRIMA INDONESIA-PT. STU





SCP-6500

ST-3000PN
144-3-3



HYDROSTATIC PRESSURE TEST

DESCRIPTION:

ST-3000-PN & SCP-6500- SCORPIO
WELLHEAD & PENETRATOR SYSTEM

TYPE OF TESTING : O-RING & SEAL SYSTEM

Part Number
ST-WO-1144
SCP-1-6500-TR

CLIENT : PT. ENERGI PRIMA INDONESIA

TESTED BY : AS/MRY

DATED : 28-04-2011

ACCEPTED BY : ES (QC SUPV)

PRESSURE STEPS

2000/4000/6000 PSI

CONDUCTED BY : PT. SAKA TEHNIK UTAMA (API CERTIFY)

incorporate with

PT. Energi Prima Indonesia

Kawasan Industri Taman Tekno Block A2 No.29, BSD Sector XI-Tangerang
Banten - Indonesia

Major Clients



الخریفة للبترول
Alkhorayef Petroleum



PERTAMINA



PetroChina